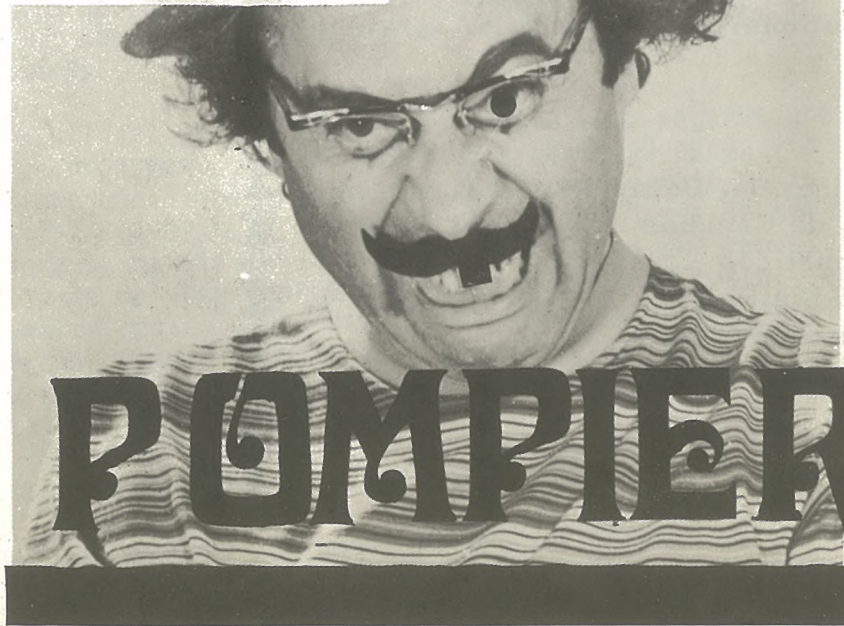
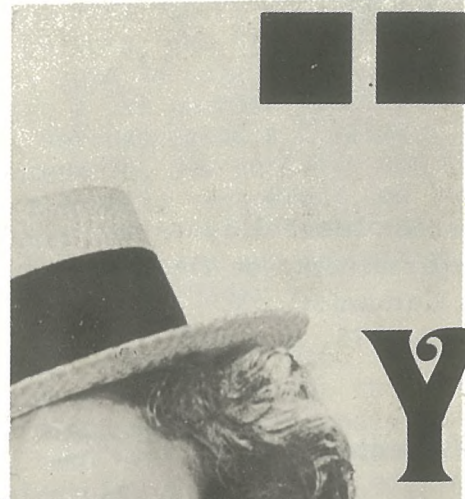


LIBRARY
Y
POMPIER

The image features a decorative border composed of various geometric and floral motifs. At the top, a row of small diamonds is followed by a series of circles and squares. The sides are decorated with clusters of circles, diamonds, and stylized floral or leaf-like shapes. The bottom edge has a row of squares and circles, with a small sawtooth pattern on the left side.

Q' forge y Pelcar, a manera de noticias de ninguna parte
estos jeroglíficos que nos está permitido vociferar



, un abrazo
de Lihn &
Pompier
10 - II - 78.